



SPENCER JAMES
RESIDENTIAL

8 Hartlepool Court | London E16 2RL
T: +44 (0) 20 7474 3636
E: mail@spencer-james.co.uk
www.spencer-james.co.uk



**** Second Floor Two Bedroom Apartment ****

**** Offered Furnished ****

**** Available Now ****

**** Allocated Parking Space ****



Burnt Ash Apartments, 29 Tarling Road,

Monthly Rental Of £1,600



Available Now is this well presented furnished second floor two bedroom one bathroom apartment within walking distance to Canning Town station. The property benefits two double bedrooms, from gas central heating, double glazing throughout, balcony, allocated parking and open plan kitchen.

Kitchen

Range of eye and base level units, four ring gas hob with extractor fan over, oven, fridge freezer, stainless steel sink with mixer tap over, open plan to lounge, double glazed window to side.

Lounge/Diner

Double glazed window to front, double glazed balcony door giving access to balcony, laminate flooring, wall mounted radiator, open plan to kitchen.

Bedroom

Carpet flooring, wall mounted radiator, fitted wardrobe, double glazed window to rear.

Bedroom

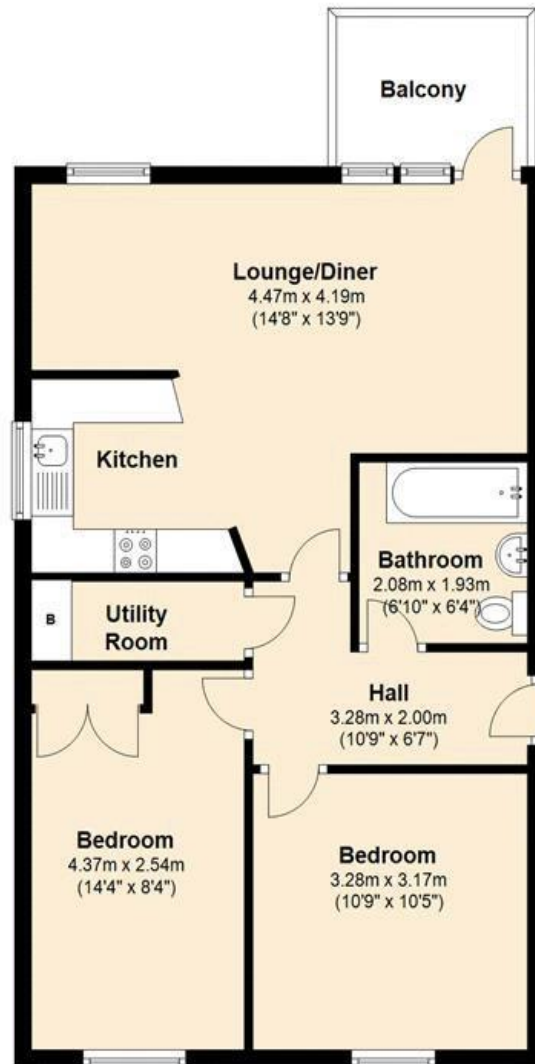
Carpet flooring, wall mounted radiator, double glazed window to rear.

Bathroom

Three piece suite comprising of wall mounted towel rail, bath with mixer tap over, sink with mixer tap over, low level wc.

Second Floor

Approx. 58.7 sq. metres (631.6 sq. feet)



Total area: approx. 58.7 sq. metres (631.6 sq. feet)



SPENCER JAMES
RESIDENTIAL





SPENCER JAMES
RESIDENTIAL